



The Rockhounder

April 2019

The purpose of the Gem, Lapidary, and Mineral Society of Montgomery County MD, Inc. is “to increase knowledge and popular interest in earth sciences, geology, mineralogy, paleontology, lapidary arts, and related subjects.”

NOTE: Please send any submissions for the May issue of The Rockhounder to Editor Olivia Luzier at editor@glmsmc.com By Tuesday, April 23, 2019.

Regular Meeting Announcements

Steven Calamuci, Vice President

April Speaker Information:

Speaker: Dr. Michael Wise

Title of Talk: Pegmatites

Dr. Michael Wise is a geologist in the Mineral Sciences Department of the National Museum of Natural History. He is a member of the Mineralogical Society of the District of Columbia (MSDC group) and he has worked on numerous scientific articles about pegmatite.

His presentation will cover the crystal chemistry/crystal structures of pegmatite minerals, pegmatite petrology and geochemistry, granite-pegmatite systems, pegmatite districts, and examples of pegmatite.

Next Regular Meeting:

Date: Monday,
April 8, 2019
Time: 7:30 PM
Place: Rockville
Senior Center
1150 Carnation
Drive
Rockville, MD

Next Board of Directors Meeting:

The Board of Directors will meet at **7:30 PM on Monday, April 15, 2019** at the home of Holly Heighes. Board members are expected to be there. Any member is welcome to come, but please let Holly know if you plan to attend.

Inside this issue:

Item	Page
Meeting Announcements, Speaker Info	1
President's Message	2
BOD Minutes, Regular Minutes	4
FRA Meeting Minutes	6
Show Table for Regular Meeting	7
Show Volunteer Thank-You	8
Macedonian Ruby Donation	11
Pictures from the Regular Meeting	14
Pictures from the Show	16
Upcoming Shows	18



President's Message

Ken Reynolds

Hello Rockhounds,

First of all, I would like to thank all of our club members who helped with our 55th Annual Gem, Mineral, and Fossil Show in March! The show was a great success and I am so proud how we all pull together as a team to make it happen! Thank you all so much; we couldn't have done it without you!

April is here and with it comes a bevy of mineral events. In Pennsylvania, the Philadelphia Mineralogical Society has their Philadelphia Mineral Treasures and Fossil Fair 2019 Show at The LuLu Temple at 5140 Butler Pike, Plymouth Meeting Pa. 19462. I have enjoyed going to the show over the years and found it a good place to pick up Maryland and Pennsylvania minerals. It is a smaller show but still packs a punch. I've always felt that it was worth the 2-1/2 hour drive from here.

If you're a New Jersey mineral collector or a fluorescent collector, you're in luck, because there are multiple shows in the month of April surely to get your fill! The first show is the largest show in New Jersey, the Edison Show or New Jersey Mineral Show. This is a big one, with 400 booths and 20,000 visitors annually; it is one of the biggest shows on the East Coast. It is being held April 3rd-7th, 2019 at the New Jersey Convention and Exposition Center, 97 Sunfield Avenue, Edison NJ 08837.

Also, we have the Franklin Show. The Franklin Mineral Show is being held at the Littell Community Center, 12 Munsonhurst road, Franklin NJ 07416, Saturday and Sunday, April 27 and 28th. Here, they have a large indoor area with worldwide minerals and jewelry, as well as some fine mineral displays, white light and fluorescent; outside, they have the dealers who pay per table to sell their minerals and gems. I personally have sold here several times and really enjoy it! I like the fact that I don't need to register or do anything but show up with a table or two and set up shop. It's a good way for any of us looking to get into selling some of our stuff! Last year the prices were \$35 per table and I imagine it will be the same this year.

Also going on in Franklin the same weekend is the Superdiggg 2019. This is being held at the Franklin Mineral Museum, 32 Evans St., Franklin, NJ 07416. They will have a list of activities going on Saturday and Sunday with everything from mineral collecting on a special pile that they call the Mill Site Pile, which is in a separate fenced-off area that you need to pre-register and pay in advance to have the opportunity to dig through this special material that was removed from the Palmer Shaft Area of the Franklin Mine. This is your best chance if you're looking to find some of the more rare Franklin minerals that you will not find elsewhere. Last year there were some excellent finds

Continued on page 3



President's Message

Continued from page 2

of Esperite, Hardystonite, Clinohedrite, and a rare find of fluorescent Bustamite by our own Mark Dahlman!

Other events include tours of the Trotter area of the Franklin mine that is otherwise fenced-off and closed to the public at all other times. Last year was my first time that I went on the tour and was dazzled by the sites and history of the mining area; I even got to go in to a short tunnel dating from the late 1800s to early 1900s! For a full list of activities and to register, go to Superdiggg.com. *This event is sponsored by our club as a field trip and our insurance covers any of our active/paid members.*

While you are up there, make sure you to visit the Sterling Hill Mining Museum just down the road 2-1/2 miles away, in Ogdensburg, New Jersey. This is the site of the famous Sterling Zinc Mine. They will be having a tent sale where you can find everything from worldwide minerals to a selection of New Jersey and Franklin minerals as well. If you haven't ever been there before, the mining tour is a must and lasts about two hours, but you get to go into an underground tunnel and learn about the mining history of the area. You will also be able to go into the Passaic Pit area, as well as the Noble Pit area to collect, for a fee. I used to go up there every last Sunday of the month just to collect in these areas and have found some incredible things; for months, I dug in the Noble Pit for Fluorapatite crystals in Calcite and was quite successful!!

It will be a fun-filled weekend! Be sure to look for me under my black grill cover with my UV light!



Hope to see you there!!!

Ken Reynolds, President

Follow us on Facebook at

[https://www.facebook.com/
groups/984241208329511/](https://www.facebook.com/groups/984241208329511/)



GLMSMC Board Meeting Minutes

There was no Board meeting for the month of March.

GLMSMC Regular Meeting Minutes from March 11, 2019

Karen Lottes

The meeting was called to order at 7:40 PM. Approximately 60 in attendance.

FRA: Mark Dahlman recognized several FRA members for achieving badges: Xena earned the World in Miniature Badge and Collin earned the Resources Badge.

Macedonian Ruby Presentation: Gary, Diane, and Frances discussed their trip to Macedonia. At the shop connected with the mine, they spoke with the owner about the club's connection to the Smithsonian. The owner wanted to donate examples of Macedonian rubies to the Smithsonian Institute for their collection. Since Dr. Post was this month's speaker, they took the opportunity to present to him a Ruby in a matrix of Prilep white marble, a sample of jewelry made from the Ruby, and a Ruby cabochon. Dr. Post was very happy to accept the donation on behalf of the Smithsonian, since they didn't have an example in their collection.

Annual Show: With the annual show happening this weekend, there were some announcements and details so things could go smoothly. Chris announced that we were well covered for volunteers with the exception of 12-2 at the kids table, the lapidary shop, set-up, and break-down. He urged people to check their shifts ahead of time for the show. We start setting up on Friday morning, about 9 AM, until finished. Joel asked if anyone could help with getting the cords in place so we have outlets where we need them.

The dealers do not start setting up until 12:00. Since we had some security concerns last year, the Board decided to add another security guard on the second floor for both days. This guard will be at the top of the stairs.

Fluorite Museum: Ken talked about the new Ben E. Clement Fluorite Museum in Marion, Kentucky. Mr. Clement was a giant in the Kentucky mining world and this museum exhibits his massive collection with thousands of Fluorite specimens.

Minutes: There were no changes to the February club meeting minutes. Moved, seconded, and accepted. No changes to the Board minutes. Also moved, seconded, and accepted.

Continued on page 5



GLMSMC Regular Meeting Minutes from March 11, 2019

Karen Lottes

Continued from page 4

Treasurer's Report: Holly reported that the club had to purchase four new case fronts and a new projector. Last month's auction did well.

Field Trips: Dave said he is hoping to arrange a field trip to Vulcan Quarry on March 30th. Look for an announcement. Also, the Micromineral Conference is April 5 & 6 in Alexandria, VA. The Super Diggg at Franklin/Sterling Hill is scheduled for April 27 & 28. It's \$50 a session, but this is when they open areas that are not normally open and you can find great material.

Sheryl Simms was a visitor at our meeting and came to see Dr. Post's presentation. Sheryl provided the video of our show that is currently on our website. Thank you, Sheryl, for visiting and taking the time to make the video for us!

PRESENTATION: DR. JEFFREY POST

Dr. Post's annual presentation on what's happening at the shows and the Smithsonian Collection's new acquisitions is always a favorite. They have a new staff member, Michael Ackerson, and a new piece of equipment, a Raman Spectrometer. This laser microscope is great for identifying minerals.

His talk elicited many oohs and aaahs at the fantastic samples he showed in his slide presentation. The Tucson show, as always, had the best of the best in mineral specimens.

There were so many extraordinary pieces added to the collection. One example was the 1401 carat aquamarine that was abandoned in a safe deposit box! He used our donation to purchase a collection of Grossular Andradite from Mali.

The meeting adjourned at 9:42.

VOTE ON PROJECTOR - In favor of getting the projector - Karen, Holly, Chris, Steve, Dave T, Gary, Ken, and Doug.



Future Rockhounds of America (The MOCKS) Ages 10-15

Mark Dahlman

Next Meeting Date: April 8th

Meeting Time: 7:45-9:00pm

Meeting Location: Sunroom Cafeteria at the Rockville Senior Center

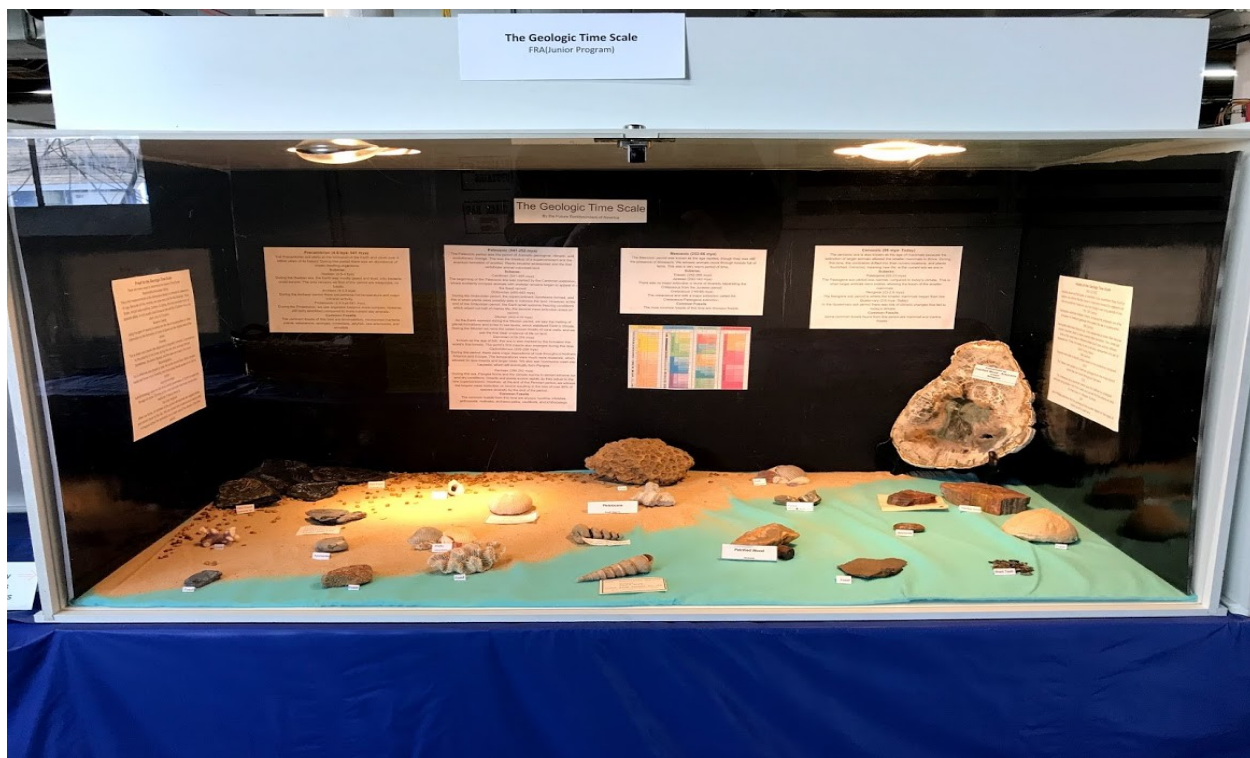
March 11th Meeting:

A huge thanks to Jennifer for leading a great group exhibit! Jennifer had each FRA member research and write about the history, a period, or the analysis of the geologic time scale and provide a fossil for the exhibit. Thanks to a lot of detailed work, it came out wonderfully. It was really great to see the exhibit and all the FRA volunteers at our club show. By exhibiting in the show and doing the activities at our March meeting, several of our members can earn the Showmanship badge.

April 8th Meeting:

We'll get back to working on the Lapidary Arts badge at our April meeting. If you've created a work of lapidary art, please bring it to our meeting. If you are working on one and it's reasonable to transport, please bring your work in progress (or pictures of it). If you haven't started on one, we'll have ideas to get you started. As always, we'll have door prizes to give away too. See you there!

For more information on the Future Rockhounds of America program, please contact Mark Dahlman at <fra_advisor@glmsmc.com> or 301-428-0455.





Show Table for March 11th Regular Meeting

** denotes self-collected

NAME	SPECIMEN	LOCALITY
Jeff Cessna	Willemite Calcite	Franklin, NJ
	Sphalerite	Franklin, NJ
Reed Owens	Fossil fish	Unknown
Gary Leaman	Stromatolite	Peru
Diane Leaman	Chrysocolla	Congo
Doug Baum	Eudialyte	Sterling Hill Mine Dump
David Tiktinsky	Polished Tsumeb mineral	Tsumeb
David Hennessey	Quartz	Peterson Mountain, Nevada
Ken Reynolds	Copper	Adams Co., Pennsylvania
	Crystalized Copper	Quincy Mine, Houghton Co., Michigan
Richard Ernst	**Petrified wood	Prince Georges Co.
Steven Calamuci	Calcite	China
Scott Gutschick	Amazonite and Amethyst	Spruce Pine, NC
Dave Fryauff	Chromite and Chromium Clinocllore	Bare Hills, Baltimore
Jonathan Harris	Spheres- Kyanite	Willis Mountain, VA
	Diopside-grossular	Hunting Hill Quarry, Rockville, MD
Alana Hulse	Cassiterite	Xuebaading, China
King Stablein	Amazonite xls on Granite	Unknown
Chuck Mason	Suite of Pebble Agates	Botswana
Casper Voogt	Fluorite	Madagascar
Nancy Shinowara	Celestite with "rainbows"	Madagascar
George Durlan	Tugtupite and Sodalite	Kangerlussaq, Greenland
Joel Rosen	Calcite	Brushy Creek Mine, Reynolds Co., Missouri
Don Greaves	Astrophyllite Lapiz	Russia?
Maia	**Mica	North Carolina

Continued on page 8



Show Table for March 11th Regular Meeting

Continued from page 7

Door Prizes

Show Table: Calcite, Moncure, See Co., NC

Won by Maia

General: Barite on Sphalerite, Elmwood Mine, Carthage, Smith Co., TN

Won by Mary Beth Mason

Show Volunteer Thank You

Chris Luzier

Well members, it is hard to believe that another show has come and gone again with all of the planning, preparation, and promoting, and then it is over!!! That being said, I want to thank all of the hard-working volunteers who helped to put the show on again, especially our newest volunteers and our veteran volunteers as well. We just could not do it without all your help!!! There are 145 volunteer slots that need to be filled every year to run the show! That's a lot of folks and I thank you all again for stepping up to fill them. I also want to say in advance, that if I miss someone, please let me know in person and I would be more than happy to thank you then if I have overlooked someone! I sincerely hope that I have not missed anyone and here we go--

First up, we had a very strong number of volunteers for set-up, which obviously makes things so much easier. We had Joel Rosen, Frank Roddy, Jeff Cessna and Jared Lottes installing and taping down all of the electrical cords. It would be a mighty dark show without this crowd... We also had for set-up, Steve Calamuci, Andy and Patricia Celmer, Tom Parnell, Ken Reynolds, Holly Heighes, Bart Teems, Pat Repik-Byrne, Jonathan Harris, Nancy Mueller, Leigh Broadhurst, Mark Dahlman and Dave Fryauff, along with our Lapidary Shop Committee members, Gary and Diane Leaman, Karen Lottes and Reed Owens. It was wonderful to see the teamwork with everyone unloading the trailers, skirting the tables, and the case set-up teams assembling all the cases. The Lapidary Shop team did

Continued on page 9



Show Volunteer Thank You

Continued from page 8

a wonderful job setting up the shop once again and making sure everything ran as intended. Speaking of the shop, I will start there with thanking everyone involved. The Lapidary Committee has put a ton of hours and time into making the shop as efficient, safe, and reliable as possible. When you see any of the aforementioned members, please give them a hearty thank you! I would also like to thank Andy Celmer, again for all his hard work with earlier years in the shop. It is a tough job for sure...

Helping to make a tough job a bit easier though this year, we had a tremendous amount of volunteers step-up to help, such as Ingris's (our front door security officer) teenage sons, Matthew and Shawn, who helped cut cabochons for the children. Along with Matthew and Shawn, we had a myriad of volunteers covering all of the tasks at the shop, including sign-up with Karen Lottes, Reed Owens on the computer and working the shop, and Gary Leaman making sure the machines and equipment kept running. The removal of dopsticks from cabs was staffed by Leila Campbell, Dawn Morales, Jeff Cessna, Diane Leaman, and Tom Parnell. For the shop cabbing stations, we had Gary and Diane Leaman, Steve Calamuci, Mira and Jared Lottes, Jonathan Harris, Chris Barr, Ben Dodge, Nancy Shinowara, Nancy Mueller, Steve Hatleberg, Herb Close, Reed Owens, Donald Greaves, Doug Baum, Alana Hulse, Katie Seitz and Ken Reynolds. Wow, that is a lot of volunteers and thank you all so much!!!

For the show Admissions and Hospitality stations, we had many volunteers running the front desk including, Ben Dodge, Diane Leaman, Elizabeth Roddy, Rob Robinson, Tom Dushel, Jonathan Harris, Larry and Leila Campbell, Jeanne App and Pat Gagne helping with Admissions. For the Hospitality section, we had Frances Becker, Doug and Marcia Baum, Pat Jayne, Chuck Mason, Pat Repik-Byrne, Lyle Peterson, Tom Parnell and Tom Brooke serving. For the Raffle (which is a major fundraiser for the show), we had Doug Baum, Barb Burr, Herb Close and Pat Repik-Byrne serving through the weekend. I have to say, this was a tremendous, record-breaking raffle at this year's show as well!! Great job to all involved with staffing the front tables!!!

For the Kids Zone and Mini Mine, we had tons of veteran kid volunteers and new faces as well! Thanks to kids and parents alike, we had another crazy busy kids area and I would like to give a special thanks to one of our eldest FRA members, Jennifer. Jennifer has always been a tremendous help in orchestrating the running of the kids area and helps to train our younger members how to run the station. Thanks very much again, Jennifer! Our parents, volunteers, and FRA members included Kristen and Kaylee, Nancy and Nicole, Tom, Dee, Xena, Greg and Isabella, Sarah and Peter and Scott. Also, I would like to offer a special thanks to Mark Dahlman for all of his time and passion

Continued on page 10



Show Volunteer Thank You

Continued from page 9

that he devotes to the FRA group here at the GLMSMC, but also the FRA group that he founded for the Franklin-Ogdensburg Mineral Society in Franklin, New Jersey! Thanks, Mark!!! I would also like to especially thank Holly Heighes for all of the work that she does behind the scenes for the Kids Zone, the front desk, and countless other tasks. This show could not run without all of her help as well!!

For the conclusion of the show, we had many of our same stalwart volunteers return after set-up to help again!! Thanks again to all of you who filled in multiple spots through the weekend. I cannot tell you how much easier that makes my job and so much more stress-free. For tear-down, thanks to Alana Hulse, Frank Roddy, Steve Calamuci, Joel Rosen, Holly Heighes, Bart Teems, Jeff Cessna, Jonathan Harris, Richard Ernst, Doug Baum, Mark Dahlman, Dave Fryauff, Greg Beyer, Katie Seitz, Casper Voogt (who also filled in last-minute for one of our dealers) and Tom Parnell. I would also like to thank all of our Demonstrators, Exhibitors, and Dealers for participating in our show. It would be quite a boring show without them! On behalf of our Upstairs Showchair, Dave Tiktinsky, as well, I once again thank you for all your help and I most especially thank Dave too for all of his hard work, planning, and time in coordinating with our dealers. Thanks so much again to all of our members who attended and supported our show--

Peace and thanks- Chris Luzier

On a side note

Frances Becker has a source for a custom made, cardboard mineral flat with a black interior color on the bottom inside of the flat! Many fluorescent mineral collectors have always wanted a flat like this and I personally have just had to paint the interior of my flats in the past. The black interior really makes regular daylight minerals show off incredibly well in the flat and are quite professional looking. We would like to remedy this situation of painting flats, by getting together a minimum order of 500, but preferably 1000 flats to bring the price down even more. With an order of 500, the flats are about \$1.60 a piece, top and bottom together. With a larger minimum order, we can shave that down a good bit again. That being said, we are looking to have orders of 50 or preferably 100 flats per person, to build this minimum order. We have about 200 spoken for now and obviously need more. The flats are roughly 16" x 11" x 3" and if you are interested please contact me, Gary Leaman or Frances Becker to let us know. Thanks very much Frances for working on this!!!



Macedonian Ruby Donation

Gary Leaman

When my stepdaughter, Jennifer Moore, moved from Phenom Penh, Cambodia, to Skopje, Macedonia, we knew we would have an exciting trip to see where she lived. In planning for our trip, Diane, Jennifer, Frances, and I got together over Skype and email to go over what we were going to do and see. Jennifer worked out a lot of sightseeing and transportation and I worked on what was unique in Macedonia. With much research, I found out about the Macedonian ruby and we decided to work on locating a jewelry shop to buy some local Filigree style jewelry for us and for Barb, who could not go on this trip.

At our last year's show, I was talking with Jeff Post and mentioned we were planning a trip to see Jennifer in Macedonia and were going to look for the Macedonian ruby. Jeff mentioned he had seen the ruby in Tucson and had one ruby out of the matrix but did not have a ruby in the matrix. I did not think too much of this at the time and continued our planning for the trip. With much research, I located two locations in Macedonia that referenced this ruby: Prilep and Skopje. We did not know if we would be able to visit Prilep, but we were staying in Skopje and selected the Best Western Hotel, not knowing this was half a block from Dean Skartov's shop.

Jennifer met Dean prior to our visit and let him know what we were looking for (jewelry with the Macedonian ruby) and that we collected rocks and minerals from the areas we visited. We went to Dean's shop and introduced ourselves. Dean asked if we were from the U.S. As we told Dean that we were from Gaithersburg, MD, about 25 miles from D.C., Dean's eyes lit up and he asked, "Do you know of the Smithsonian? Are you close to the museum?" Dean then mentioned that, for the last few years, he had wanted to donate the Macedonian ruby in matrix to the Smithsonian, similar to donations he had made to other museums in his region of the world.

Dean would like to have one of his specimens displayed in the Smithsonian to represent a Macedonian natural resource and gem that is mined in Prilep, along with the Macedonian Bianco Sivec (pure white marble). We mentioned that Dr. Jeff Post from the Department of Mineral Sciences at the Smithsonian spoke at our club and I would contact him to see how making a donation works. After email conversations with Jeff and Skype conversations with Jennifer, we asked Jennifer to make another trip to Dean's shop. Dean was able to pull together the items we are donating for him. Jennifer kindly brought them back to the U.S. on her recent visit to the U.S.

For pictures, see page 12

Macedonian Ruby Donation

Continued from page 11



This is a photo of all of us at Dean's shop.



This is a photo of the presentation of the donation to Dr. Jeff Post.

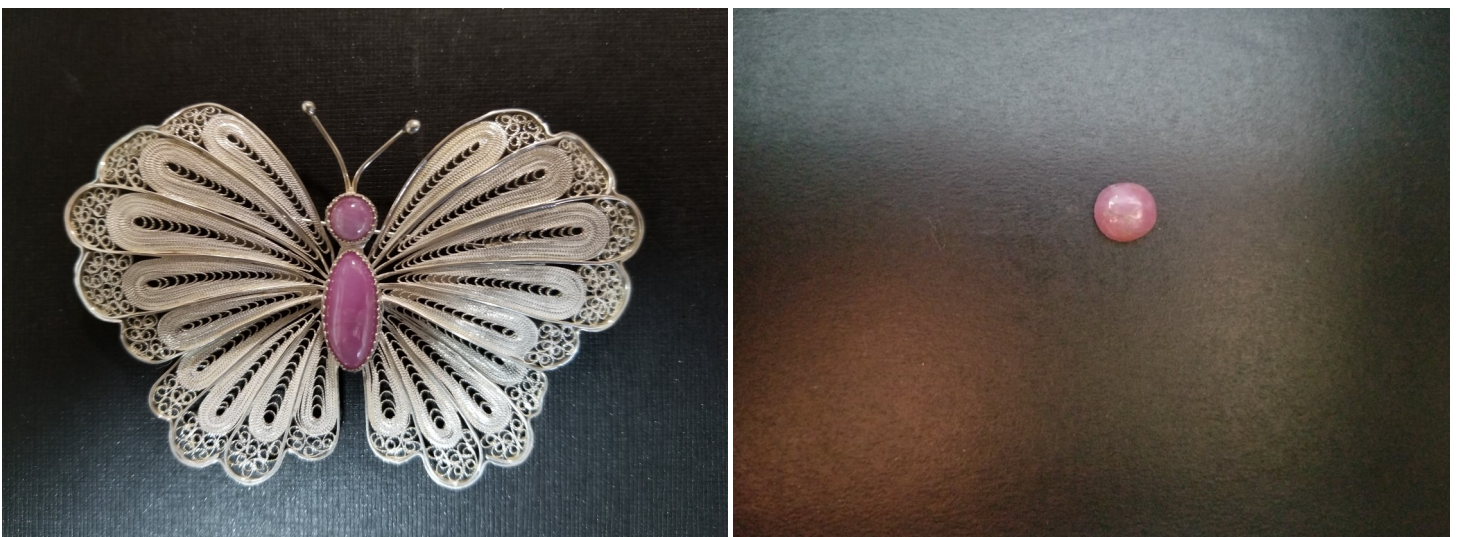
Continued on page 13

Macedonian Ruby Donation

Continued from page 12



This shows the Macedonian ruby in a marble matrix and with a close-up of the ruby.

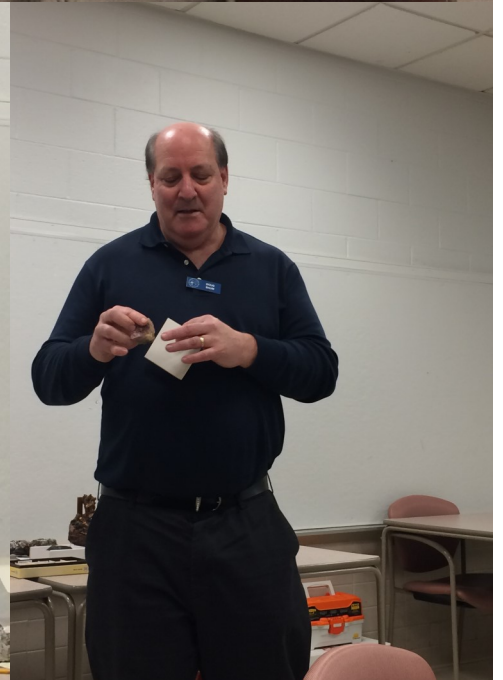
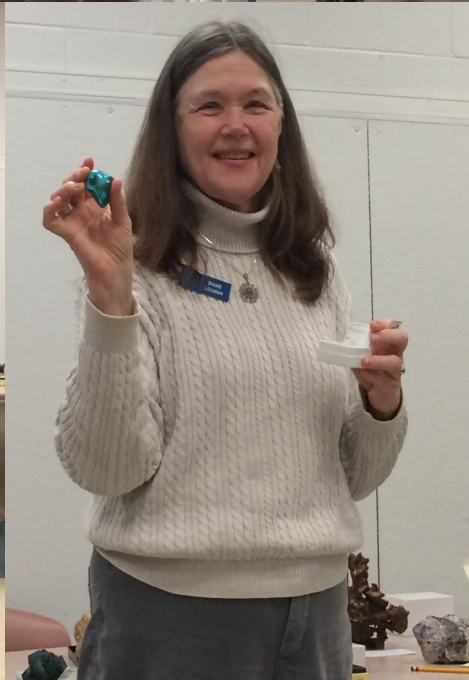


This is Macedonia ruby in Filigree (in a Macedonian and Bulgarian jewelry style) and separate ruby.



Pictures from the March 11th Regular Meeting

Photos courtesy of Holly Heighes





Pictures from the March 11th Regular Meeting



Photos courtesy of Holly Heighes



Pictures from Our Annual Show

Photos courtesy of Doug Baum, Jeff Cessna, Ken Reynolds

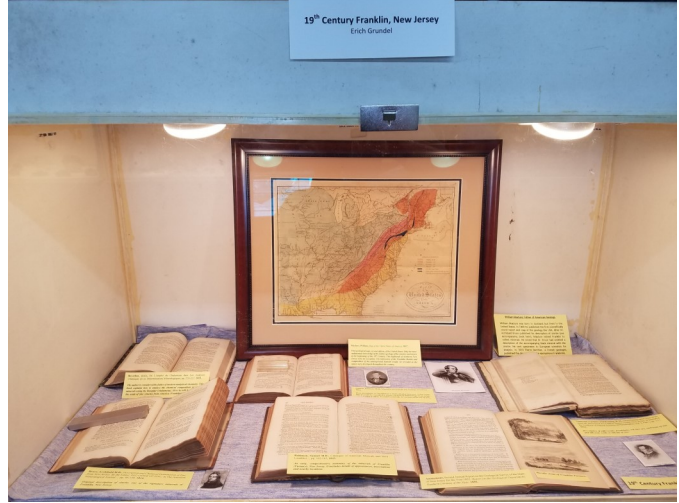


Continued on page 17



Pictures from Our Annual Show

Continued from page 16



Photos courtesy of Doug Baum, Jeff Cessna, Ken Reynolds



Upcoming Shows

46th Annual Atlantic Micromounters' Conference in Alexandria, Virginia

Speaker: Author Extraordinaire, Dr. Robert J. Lauf

Topics include:

1. Electron Microscopy: The Final Frontier of Magnification
2. 2. Mineralogy of Uranium and Thorium
3. 3. Orthosilicates.

Dr. Michael Pabst will present Rare Earth Minerals.

April 5-6, Friday 6-9 PM

Saturday 8:30 AM-9 PM

Cost for 2-day conference \$30

Holiday Inn Express, 6055 Richmond Hwy, Alexandria, VA 22303

Hotel reservation: *Phone (571) 257-9555*

Club: The Micromineralogists of the National Capital Area, Inc.

Conference Chair, Kathy Hrechka

www.dcmicrominerals.org



Upcoming Shows

 Bead Society
of Greater
Washington

**69th Semi-Annual
BEAD, JEWELRY & TEXTILE
BAZAAR**

SATURDAY APR. 6, 2019 10:00AM - 5:00PM
SUNDAY APR. 7, 2019 11:00AM - 5:00PM

ACTIVITY CENTER AT BOHRER PARK
506 South Frederick Avenue
Gaithersburg, MD 20877

SAT. ONLY FREE SHUTTLE FROM SHADY GROVE METRO

ADMISSION \$6.00 or \$5.00 with this card
MORE INFO: www.beadbazaar.org

JEWELRY FINDINGS
BEADS
TEXTILES BOOKS

BEAD ID - SAT & SUN 12 - 2 PM
DEMONSTRATIONS - THROUGHOUT BOTH DAYS

- CHILDREN UNDER 12 FREE -

FALL BAZAAR NOVEMBER 9 & 10, 2019



Upcoming Shows

With this ad, \$1.00 off General Admission

2019

GEM MINER'S JUBILEE!!

August 16 - 18
LEBANON, PA
Beads! Findings!
Minerals! Fossils!
Gems & Jewelry!

THE MID-ATLANTIC'S BEST SHOW

RETAIL AND WHOLESALE EXHIBITORS
CLASSES, TAILGATING & CAMPING
BEAD, JEWELRY AND MINERAL RELATED DEMONSTRATIONS
OPEN TO THE PUBLIC ❖ WHOLESALE ROOM

FRIDAY & SATURDAY, AUG. 16 - 17: 10 A.M. - 6 P.M.
SUNDAY, AUG 18: 10 A.M. - 4 P.M.

\$6 ADMISSION - CHILDREN UNDER 12 FREE

Lebanon Valley Expo Center
80 Rocherty Road
Lebanon, PA 17042
www.gem-show.com
(see website for updates)
(301) 807-9745





Upcoming Shows

Super Digggg™

2019

9AM - 11PM April 27th

Event Schedule: <http://events.superdiggg.com/>

Tools, Safety Glasses and UV lights
will be available for purchase at the Franklin Museum.

Provided:

- Restroom facilities
- Electricity (in darkroom)
- Off-road parking area

NO AGE RESTRICTION THIS YEAR !

Bring all safety equipment:

Gloves, steel toe boots, eye protection

Local hotels/motels fill up quickly,
so if you are staying in the area overnight
be sure to reserve early.

Pre-Register For Super Diggg: Open now @ <http://sterlinghillssuperdig.org/>

April 27, 2019

Along with the Annual NJESA
Gem and Mineral Show & Outdoor Swap & Sell!



The Delaware Valley Earth Science Society (DVESS), in cooperation with the Franklin Mineral Museum, invite you to share an internationally famous collecting experience.

This field trip has attracted dedicated collectors from across the globe.

Be one of them this year!

It WILL be an historic and memorable event.





Upcoming Shows

Living Estate Auction

Date: Friday, June 14th, 2019

Time: 7:30 pm (viewing at 7:00 pm)

Place:

Westchester Community Center
2414 Westchester Ave., Oella Md.21043

Refreshments are available.

Directions:

From the north:

Take I-695 to US 40 west (exit 15B). Turn left on N. Rolling Rd. Turn right at Old Fredrick Rd. (You will pass through 1 roundabout). Turn right on Oella Ave. Turn left on Westchester Ave. Westchester Community Center is on the right.

From the south:

Take I-695 to Fredrick Rd. (exit 13). Turn left on Fredrick Rd. Follow Fredrick Rd. approx. 2.7 miles. Turn right on Oella Ave. Turn left on Westchester Ave. Westchester Community Center is on the right.

Need a map? You can find one on our web site.

<chesapeakegemandmineral.org>



Upcoming Shows

30th Annual

Chesapeake Gem & Mineral Show

Saturday, May 11, 2019
10 AM – 4 PM

Ruhl Armory - Towson, MD

FREE ADMISSION

Top Mineral Dealers, Original Jewelry,
Fossil Dealers, Rough & Cut Gemstones

Silent Auctions, Door Prizes

Free minerals for kids

www.chesapeakegemandmineral.org

Directions: Take I-695 (Baltimore Beltway)
to exit 26 - York Road South
Ruhl Armory is on the east side of York Road
(across from a car dealer and funeral home)
just inside I-695.

If you are planning a trip and want to know what clubs you might be able to visit, it would be worthwhile to visit the American Federation of Mineralogical Societies website. Check out their newsletter archives at <http://www.amfed.org/news/default.htm>.





BOARD OF DIRECTORS

President – Ken Reynolds

Vice President – Steven Calamuci

Secretary – Karen Lottes

Treasurer – Holly Heighes

Field Trip Chairman – Dave Fryauff

Membership Chairman – Doug Baum

Downstairs Showchair – Chris Luzier

Upstairs Showchair – Dave Tiktinsky

Property Manager – Joel Rosen

Immediate Past President – Jonathan Harris

EFMLS Liaison – Wendell Mohr

Bulletin Editor– Olivia Luzier

Life Members: Larry Harrison, Wendell Mohr, Juan Proaño, and George Durland

Society Address: Gem, Lapidary, and Mineral Society of Montgomery County MD., Inc.

P. O. Box 444, Gaithersburg MD 20884-0444

Website: <http://www.glmsmc.com/>

All Society correspondence is to be sent to this address except that which is intended for The Rockhounder and its editor. Such items are to be sent to the editor's email address at editor@glmsmc.com.

Permission to copy material printed herein, except specifically copyrighted items, is granted, provided credit is given.

Award Winning Bulletin
EFMLS, AFMS



**TIME SENSITIVE
DATED MATERIAL
FIRST CLASS MAIL**

**The Rockhounder
Gem, Lapidary, and Mineral Society
of Montgomery County, MD, Inc.
P. O. Box 444, Gaithersburg MD
20884-0444**